

# Ski Blanc



Chalet Holidays in Meribel



Tel +44 (0) 207 043 5745 & +44 (0) 208 502 9082

Email [info@skiblanc.co.uk](mailto:info@skiblanc.co.uk)

[www.skiblanc.co.uk](http://www.skiblanc.co.uk)

**Our chalets provide the perfect combination of location and comfort. All within 100-400m of the gondola. This gives quick & easy access to the slopes, Meribel skiing and the world renowned 3 valley ski area.**

# Welcome to Ski Blanc

## 6 superb chalets

- Hot tubs/Jacuzzi and sun terrace in 4 chalets
- Open log fires and stunning views
- Full English breakfast, afternoon tea and 3 course evening meal with complimentary wine
- Twin, double and family rooms
- Optional early teas for children
- Chalets of varying sizes 8-17 beds
- Bed linen & bath towels provided
- A selection of DVD's and a music system



**Foehn**  
14/16 Beds



**Charmille**  
12/14 Beds



**Phoenix**  
10 Beds



**Covie**  
12/14 Beds



**Sourire**  
8/9 Beds



**Vieille Scierie**  
16/17 Beds

### Ski Blanc service

We are committed to providing chalet holidays with a personal touch and always on hand to advise on chalet layouts, the resort, travel arrangements, childcare facilities, best lunch spots, and any other details you require. Ski Blanc will soon be in its 20th season and during this time it has gone from strength to strength. We pride ourselves on the fact it's us you talk to, us you deal with and us you see throughout your experience with Ski Blanc to ensure you have a relaxing stay with us. Lift passes are delivered directly to your chalet and ski hire is on your doorstep giving you maximum slope time. Ski schools visits are arranged in your chalet to discuss your requirements. Your chalet hosts have been carefully selected for their superb cooking skills, flexibility and friendly personalities. Janey the manager and Tony the owner are both resident in Meribel Les Allues all year round to ensure continuity and the smooth running of the program. The attention to detail is a consistent feature of the feedback we receive from our guests.

### Unbeatable value for money

Our prices reflect our great value for money holidays. Our aim has always been to provide a very personal service, in comfortable chalets, in a top ski resort whilst making it affordable for everyone.

### Freedom of independent travel

Booking an independent chalet gives you the flexibility to book the holiday you want with your choice of travel. See our travel section (p10) for all the options

### Thank you!

**We would like to thank the large number of regular clients who return year after year for their support with a 5% loyalty discount on holidays booked this winter. We warmly welcome those staying with us for the first time. Please call anytime so we can help you with your booking.**

**TONY DE JODE, Managing Director/Owner**  
**JANEY TONKINSON, Manager**

Tel **+44 (0) 207 043 5745 & +44 (0) 208 502 9082**

Email **info@skiblanc.co.uk**

**www.skiblanc.co.uk**

**Contact NOW for a quote**

Meribel Les Allues sits in the heart of the 3 Valleys, the most extensively linked ski area in the world. With nearly 200 lifts, 600km of piste it caters for all skiing levels. High altitude skiing with peaks which soar to over 3300m combined with impressive snowmaking, guarantees great skiing all season long.

Tel/Email for information & reservations  
**Tel: +44 (0) 207 043 5745**  
**+44 (0) 208 502 9082**  
**info@skiblanc.co.uk**  
**www.skiblanc.co.uk**

# Location Meribel Les Allues

## Meribel at a glance

- A large choice of English speaking ski schools and mountain guides
- Childcare facilities and English nannies for all ages
- The Olympic centre boasting an Olympic ice rink, spa & wellness centre, swimming pool, fitness gym, rock climbing wall and 10 pin bowling alley.
- Guided snow shoe walks and many groomed walking paths
- 33km of free cross country trails
- Pleasure flights, parapenting, dog-sledding, skidoos, torchlit descents and tobogganing
- Picturesque town centre with over 50 boutiques
- Legendary après ski entertainment every night.



The charming village of Meribel Les Allues offers a unique alpine atmosphere. It has several excellent restaurants, a popular bar and après ski venue with local bands and entertainment, Wi-Fi access, a local supermarket, post office and ski hire shop, all within easy walking distance of our chalets and childcare facilities are close to hand.

### Access

Access to Meribel centre and the slopes is quick & easy. The fast 6 seater gondola, takes you directly to the central lift station, La Chaudanne in Meribel centre from the village of Les Allues. All 6 chalets are within 100m-400m walk to the lift and the free regular public bus service. It is also possible to ski back down the gentle blue run through the trees from Meribel to Les Allues, snow permitting.

### Free courtesy minibus

A free evening minibus service with our dedicated drivers will drop you back to your chalet from Meribel centre, so that you can stay for après ski after the lifts have closed. You may also want to enjoy the Meribel nightlife after dinner, our drivers will take you up into town and drop you home again anytime until 1am.

### Ski lockers

Ski lockers can also be hired in La Chaudanne area for those wanting to leave their equipment in the centre for a nominal fee.

## Three Valley Ski Facts



3  
CABLE CARS



3  
FUNITELS



33  
TELECABINES



67  
CHAIRLIFTS



54  
DRAG LIFTS



14  
MAGIC CARPET



32  
BLACK RUNS



115  
RED RUNS



124  
BLUE RUNS



38  
GREEN RUNS

*"Darren & Hannah were absolutely fantastic: the food was unsurpassable, and they were genuinely helpful, cheery and tolerant! I wouldn't hesitate to recommend your company."*

04 Jan 2011 K Clarkson

# Food

## Sample Menu

A 'taster' from our 6 day menu plan.

### STARTERS

- Red onion tarte tatin
- Warm goats cheese salad with lardons & walnuts
- Spicy pumpkin & coconut soup

### MAIN COURSE

- Baked crumbed chicken with mozzarella & thyme, lemon risotto and green salad
- Salmon en crouete with tomato, chilli & cucumber salsa, crispy leeks & new potatoes
- Pork stroganoff, buttered tagliatelle & braised green beans

### DESSERTS

- Chocolate pecan pie
- Sticky date pudding with caramel sauce
- Lemon tart & crème fraiche

## What's included:

### LIGHT REFRESHMENTS:

Upon arrival at your chalet our carefully chosen staff will be there to greet you with a refreshment and to answer any questions.

### FULL ENGLISH BREAKFAST:

Your day starts with a substantial English breakfast, plus a selection of cereals, porridge, fresh bread, jam, tea, coffee and fruit juices.

### AFTERNOON TEA:

Freshly baked cakes or homemade cookies, tea, coffee, hot chocolate, fruit cordial, French bread and preserves will be waiting for you on your return from skiing.

### 3 COURSE EVENING MEAL WITH WINE:

A deliciously prepared evening meal with complimentary wine followed by coffee. Your hosts have one day off during the week when you can sample one of the excellent local restaurants.

### CHILDREN'S MENU:

Children are well catered for with freshly prepared home cooked favourites. In all the chalets early teas can be provided for young children.

### DIETARY REQUIREMENTS:

The chalet staff can cater for any vegetarians or special dietary requirements.



# Kids



We warmly welcome children in all our chalets. We can provide cots, highchairs, a selection of toys, bumboards, children's DVDs and arrange babysitting. Les Allues is very well suited for families with its lovely village atmosphere and childcare facilities close to hand.

For British Private nanny and babysitting services try:

- ♥ [www.merinannies.com](http://www.merinannies.com)
- ♥ [www.snowbugs.co.uk](http://www.snowbugs.co.uk)
- ♥ [www.snowangelnannies.co.uk](http://www.snowangelnannies.co.uk)

The ESF run a very well equipped crèche (Les Saturnins), in Meribel, for half and full days from 18 months to 3yrs and a snow kindergarten (Piou Piou) with an introduction to skiing for 3 to 5 year olds.

♥ [www.esf.com](http://www.esf.com)

British run ski school for 4 to 5 year olds skiing 2 hours a day.

- ♥ [www.magic.fr.com](http://www.magic.fr.com)
- ♥ [www.parallel-lines.com](http://www.parallel-lines.com)
- ♥ [www.skinewgen.com](http://www.skinewgen.com)

**From experience we have found it makes your 1st days skiing much more relaxed if your ski packs are arranged in advance of your arrival and we are only too happy to help with this.**

Tel/Email for information & reservations  
**Tel: +44 (0) 207 043 5745**  
**+44 (0) 208 502 9082**  
**info@skiblanc.co.uk**  
**www.skiblanc.co.uk**

The ski pack information & booking form will be sent to you, just indicate your requirements.

# Lift Passes

These will be delivered to your chalet at no extra charge, plus we take no advance payment for this, you just settle up on arrival.

Liftpass	6 day		7 day		8 day	
Prices (Euros)	3 valley Méribel only		3 valley Méribel only		3 valley Méribel only	
Adult	241€	196€	277.50€	221€	316€	251.50€
Child 5-12yrs	181.50€	147€	208.50€	166€	237.50€	189€
Senior 65-74yrs	207€	169€	238.50€	190€	271.50€	216€
Family 4 pass	771€	643€	888€	725€	1011€	825€

Under 5s and 75 years plus - FREE

Family 4 pass – 2 parents and 2 children (ages 5-17 inclusive). For a 3rd or 4th child add the individual rate of a child to the Family 4 pass even if over 12.

# Ski Hire

The local 'Ski Higher' shop is conveniently located in the village centre, just a couple of minutes walk from all our chalets. British run and well stocked with a choice of equipment to choose from and swap around at any time. To ensure you get the best ski hire price, a DISCOUNT is given to all Ski Blanc customers off the shop's public price. Equipment to suit all budgets. You have total FLEXIBILITY as you are not paying anything upfront. You can also hire children's equipment and helmets. The shop stays open late for us on arrival day, and re-opens at 8am first thing Sunday morning.

Ski hire public prices for 6 days (Euros)

Category	Budget Slider	Pathfinder	Mountain Tracker	Trailblazer
Skis	75€	98€	125€	155€
Snowboard			125€	
Ski/board boots	45€	55€		
Children's skis & boots pack	ages 3-6yrs = 65€ ages 6-11yrs = 75€			

# Ski & Snowboarding Schools

A guide to the best ski schools in Meribel. BOOK DIRECTLY and let them know you are with Ski Blanc for a priority booking service. Pre-booking is advisable before departure and essential during school holiday periods.



## Magic Ski School

W [www.magicfr.com](http://www.magicfr.com)  
 E [meribel@magicfr.com](mailto:meribel@magicfr.com)  
 T +33 (0)4 79 08 53 36  
 F +33 (0)4 79 00 31 40

A firm favourite with Ski Blanc guests, highly recommended – our no. 1 choice. They have a superb reputation for offering a personalised approach in small friendly groups for adults and children. Catering for the British market with excellent English speaking instructors. Private tuition available. Book early to avoid disappointment.

## Parallel Lines British Ski & Snowboarding School

W [www.parallel-lines.com](http://www.parallel-lines.com)  
 E [info@parallel-lines.com](mailto:info@parallel-lines.com)  
 UK +44 (0)844 811 2779  
 France +33 (0)4 79 00 32 21

All the Parallel Lines team are British Instructors holding the highest British and European qualifications. Whether you're a beginner or advanced, skier/snowboarder, adult or child they have group lessons, privates and clinics to suit. They also offer off-piste courses and heli-skiing. A very personal Ski School which comes highly recommended.

## New Generation

W [www.skinewgen.com](http://www.skinewgen.com)  
 E [info@skinewgen.com](mailto:info@skinewgen.com)  
 Local rate from UK 0844 484 3663  
 All other countries, call France +33 (0)4 79 01 03 18

A British-based ski & snowboard school in Meribel offering small group lessons for adults (min2, max 8). Children's lessons available during school holidays. Throughout the season shorter technical clinics & private lessons are on offer. All lessons are in English.

## Cab 9 Snowboarding School

W [www.cab9snowboarding.com](http://www.cab9snowboarding.com)  
 E [paul@cab9snowboarding.com](mailto:paul@cab9snowboarding.com)  
 T +33 (0)6 21 21 84 44

Dedicated to solely snowboarding, a small team of highly-qualified British snowboarding instructors. They provide second-to-none coaching for all snowboarders from the beginner to snow park addict.

**These three superbly positioned chalets are within 100 metres of the lift and close to the shops, lively bar and restaurants in this lovely village.**

## Chalet Foehn,



### Chalet Facts

- Chalet Foehn: 6 bedrooms
- Chalets Covie & Charmille: 5 bedrooms
- 3 twin bedrooms with en-suite shower
- Family bedroom for 4 with annex & en-suite bath. 4th bed is foldaway
- Large 3 bed family room with en-suite bath, possible to add 4th foldaway bed
- Chalet Foehn has an extra reduced rate twin room with en-suite shower
- 100m to gondola lift
- 100m to ski bus stop
- Outside hot-tubs
- Log fires
- Large south facing balconies
- TV, DVD & CD player
- Ski & boot storage
- Private Parking
- Chalet Foehn Staff live out
- Chalets Covie & Charmille Staff live in

- ♥ They offer all the comfort and space you could wish for. Built tastefully and to exacting high standards by a local family they have proved to be a great success. They also have the added feature of outdoor hot-tubs, a great way to relax at the end of the day.
- ♥ The bright generous lounge and dining room have stunning views which can also be enjoyed from its large south facing sun deck. The comfortable lounge area is warm and inviting with a cosy log fire.

*'A massive thankyou. We all had such a great time in Les Allues. The chalet itself was comfortable, warm and very inviting, lovely to return back to after a day on the slopes. Our chalet hosts Morgan & Sam were truly wonderful. The food was great with attention to detail and beautiful presentation. It was so nice to have a homely, substantial meal and not a pretentious one as we had experienced on other holidays. The children loved their food too.'*

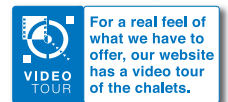
01 Mar 2011 K Sanderson

# Covie & Charmille

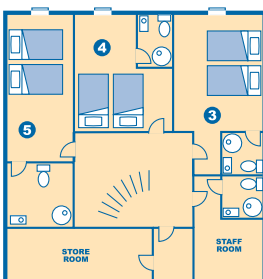
Accommodates Covie/Charmille 12/14 guests, Foehn 14/16 guests



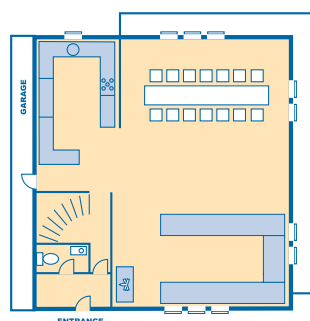
- Chalets Covie & Charmille comprise 5 en-suite bedrooms and Chalet Foehn has 6 en-suite bedrooms. Upstairs the bedrooms are spacious with en-suite bathrooms and have their own balconies. Downstairs the bedrooms are a good size with their own en-suite shower rooms.
- The chalets benefit from the best of modern technology and traditional architecture with under floor central heating, individual room temperature control, large double glazed windows and wonderful views.
- Ideal for a group of friends, couples or several families. A popular choice for large groups is to combine a couple of chalets. All are identical and next door to each other.



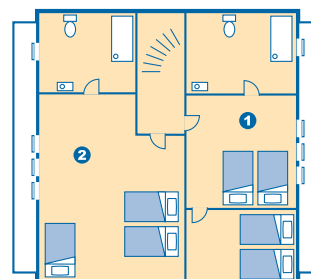
**CHALET FOEHN, COVIE & CHARMILLE**  
**GROUND FLOOR**  
STAFF ROOM IS REDUCED RATE ROOM 6 IN CHALET FOEHN



**CHALET FOEHN, COVIE & CHARMILLE**  
**MIDDLE FLOOR**



**CHALET FOEHN, COVIE & CHARMILLE**  
**TOP FLOOR**



A lovely bright and spacious chalet, built to a high standard. This chalet enjoys a wonderful central location. Just a short walk to the lift and local village amenities close by, makes it an ideal mountain retreat.

Tel/Email for information & reservations  
**Tel: +44 (0) 207 043 5745**  
**+44 (0) 208 502 9082**  
**info@skiblanc.co.uk**  
**www.skiblanc.co.uk**

# Chalet Sourire

Accommodates 8/9 guests

## Chalet Facts

- Located centre Meribel Les Allues
- 400m to gondola lift
- 100m to ski bus stop
- 4 twin bedrooms
- Possible to add extra foldaway bed
- 2 shower rooms
- 2 separate toilets
- TV, DVD & CD player
- Large balcony
- Wonderful views
- Ski & boot storage
- Staff live out

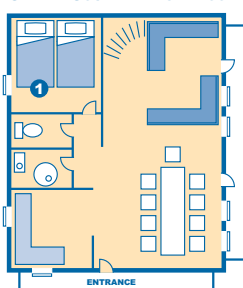


- The attractive lounge and dining room offers a relaxed social setting to spend time with family and friends. The French windows lead onto a large sunny balcony with breathtaking views across the Les Allues valley. The interior has been tastefully finished using an abundance of local pine. The bedrooms are all a good size and offer comfort and space. There are two modern well-appointed bathrooms with two separate toilets.
- This chalet has proved very popular for groups of friends or a couple of families. For larger groups, why not combine with Chalet Phoenix just opposite.

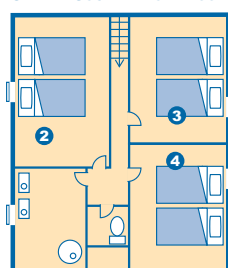
*"I just wanted to thank you and your colleagues for a great week in Meribel at Chalet Sourire. We all had a brilliant time. Our special thanks to Gemma and Richard who really did make our stay a lovely one. Particularly the standard of cooking. I would not hesitate to use Ski Blanc again and thank you for the smooth running from start to finish."*

07 March 2011 S Bremner

CHALET SOURIRE FIRST FLOOR



CHALET SOURIRE TOP FLOOR



**Chalet Phoenix is a lovely traditional Savoyarde chalet. Located in the centre of this picturesque village it benefits from an easy walk to the lift and local facilities are close to hand.**

Tel/Email for information & reservations  
**Tel: +44 (0) 207 043 5745**  
**+44 (0) 208 502 9082**  
**info@skiblanc.co.uk**  
**www.skiblanc.co.uk**

# Chalet Phoenix

Accommodates 10 guests



## Chalet Facts

- Located centre of Meribel Les Allues
- 400m to gondola lift
- 100m to ski bus stop
- 2 double bedrooms with en-suite shower
- 2 twins with en-suite shower
- 1 bunk bedroom with en-suite shower
- Log fireplace
- Ski & boot storage
- TV, DVD & CD player
- Staff live out

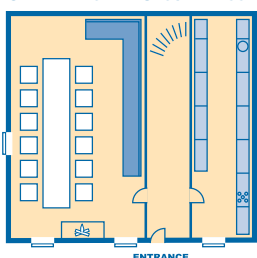


- This delightful old chalet is over 200 years old and retains many of its original features, old beams, pictures and even the creaking floorboards add character to this alpine home. The five snug bedrooms are simply furnished but all benefit from having newly renovated en-suite facilities, and are situated on three floors.
- The focal point is the cosy lounge area and very welcoming atmosphere with a roaring open log burner - a great place to relax during the winter evenings.
- Ideal for a group of friends, or several families. For larger groups, why not combine with Chalet Sourire just opposite.  
 (Please bear in mind the stairs are quite steep if you have young children).

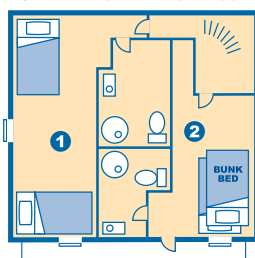
*"A big thank you to Ski Blanc, our week in Les Allues was fantastic, made mainly so by the hospitality shown to my party by Rachel & Harry in Chalet Phoenix - what a pair of stars. The chalet was exactly what we expected, with character and its own unique features. Its location is ideal. Again, thank you and looking forward to using your company again."*

17 Jan 2011 A Barton

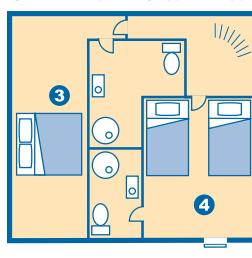
CHALET PHOENIX GROUND FLOOR



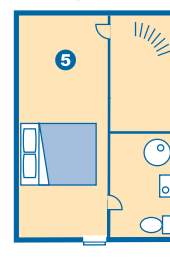
CHALET PHOENIX FIRST FLOOR



CHALET PHOENIX SECOND FLOOR



CHALET PHOENIX THIRD FLOOR



For a real feel of what we have to offer, our website has a video tour of the chalets.

This well appointed chalet is located in the heart of this charming village. Just under 5 mins walk to the lift gives easy access to the slopes. Designed by a local architect and built to our own specification, this is a large and beautifully finished chalet and has become a firm favorite with our guests.

Tel/Email for information & reservations  
**Tel: +44 (0) 207 043 5745**  
**+44 (0) 208 502 9082**  
**info@skiblanc.co.uk**  
**www.skiblanc.co.uk**

# Chalet Vieille Scierie

Accommodates 16/17 guests

## Chalet Facts

- Located centre of Meribel Les Allues
- 300m to gondola lift
- 50m to ski bus stop
- 7 twin bedrooms with en-suite baths
- 1 triple bedroom with en-suite bath
- Jacuzzi
- Log fire
- 2 lounge areas
- TV, DVD & CD player
- All rooms have balconies
- Very spacious
- Parking close
- Ski & boot storage
- Staff live in

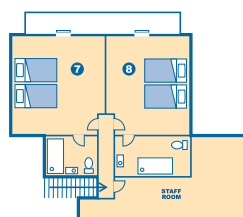


- The spacious lounge and dining room, with direct access to its own balcony has magnificent views up and across the valley. It provides the perfect place to relax after a dip in the jacuzzi and a chance to unwind by the open log fire.
- All eight bedrooms are individually finished and have en-suite bathrooms and their own balcony. In the dining room, it has a second sitting area with TV and DVD player, which also provides an ideal children's play area.
- This extremely well-equipped chalet offers a superior level of accommodation. It provides the perfect ambiance for a relaxed holiday in the mountains.

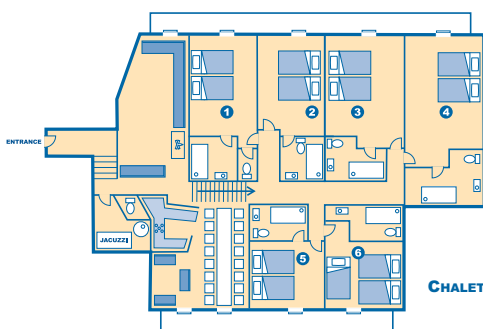
*"A huge thank you to you and your team for another excellent week. Our group had such a good time. Please pass on a special thank you to James and Maria, who were such great hosts. James's cooking was exceptional. We had the best time ever and will not think twice to book another trip through you."*

28 Mar 2011 M Masters

CHALET VIEILLE SCIERIE TOP FLOOR



CHALET VIEILLE SCIERIE FIRST FLOOR



Getting to the Alps couldn't be easier. You can fly, drive, or take the train. There is a huge choice of airlines, including low budget and competitive car hire available from your chosen airport. Travel to and from the resort is not included in our prices allowing you total flexibility with your budget & travel plans.

Tel/Email for information & reservations  
**Tel: +44 (0) 207 043 5745**  
**+44 (0) 208 502 9082**  
**info@skiblanc.co.uk**  
**www.skiblanc.co.uk**

# Travel Options



## BY AIR

Airport transfer times:

- Chambery - 1.15hrs
- Geneva - 2hrs
- Lyon St Exupery - 2hrs
- Grenoble airport - 2hrs

The above are all served by numerous airports in the UK. To find out who flies from where look up [www.skyscanner.net](http://www.skyscanner.net)

For booking ski flights to Chambery try low cost specialists [www.snowjet.co.uk](http://www.snowjet.co.uk)

The following companies all provide flights to the Alps

- [www.satellitetravel.co.uk](http://www.satellitetravel.co.uk)  
T 0208 643 3666
- [www.ski-flights.com](http://www.ski-flights.com)  
T 0870 830 8136.
- [www.easyjet.com](http://www.easyjet.com)  
T 0870 600 0000
- [www.ryanair.com](http://www.ryanair.com)  
T 0871 246 0000
- [www.ba.com](http://www.ba.com)  
T 0845 773 3377
- [www.swissair.com](http://www.swissair.com)  
T 0845 601 0956
- [www.bmibaby.com](http://www.bmibaby.com)  
T 0870 264 2229
- [www.flybe.com](http://www.flybe.com)  
T 0871 700 0723
- [www.jet2.com](http://www.jet2.com)  
T 0871 226 1737
- [www.thomsonfly.com](http://www.thomsonfly.com)  
T 0870 190 0737



## TRANSFERS

Ski Blanc is happy to arrange shared airport

transfers from Geneva and Chambery. The price is £80 return per person.

This is based on 4 or more people sharing and subject to availability. Please contact us for a quote for 1-3 people, likewise if you want a transfer from Lyon or Grenoble. We can also arrange transfers from Moutiers train station for £15 return per person based on 4 people sharing.

Our transfers are competitively priced and do book up quickly so please email us at [info@skiblanc.co.uk](mailto:info@skiblanc.co.uk), as soon as you can to reserve your place.

The following companies also offer a transfer service:

- [www.snowboundtransfers.co.uk](http://www.snowboundtransfers.co.uk)
- [www.meribeltransfers.com](http://www.meribeltransfers.com)
- [www.snowlinx.com](http://www.snowlinx.com)
- [www.transfer-solutions.co.uk](http://www.transfer-solutions.co.uk)
- [www.bensbus.co.uk](http://www.bensbus.co.uk)
- [www.3vt.co.uk](http://www.3vt.co.uk)
- [www.transfer-intelligence.com](http://www.transfer-intelligence.com)
- [www.alpynecab.com](http://www.alpynecab.com)
- [www.thecoolbus.co.uk](http://www.thecoolbus.co.uk)



## CAR RENTAL

Hiring a car is a very convenient way of getting from the airport to resort. The following can give you an immediate online quote.

- [www.europcar.co.uk](http://www.europcar.co.uk)
- [www.holidayautos.co.uk](http://www.holidayautos.co.uk)
- [www.easycar.co.uk](http://www.easycar.co.uk)
- [www.sixt.co.uk](http://www.sixt.co.uk)



## BY CAR

Self driving couldn't be easier and can be

taken at your own pace. Meribel is just under 600 miles from the channel ports. The journey is served by good motorways to within 12 miles of the resort. Tolls are about 80€ each way. If you are looking for an extra night en route visit [www.chaletverger.com](http://www.chaletverger.com) A stunning house run by a British couple with great rates, so book early for their popular Friday night.

Channel crossings

- P&O Stena Lines  
[www.posl.com](http://www.posl.com)  
T 0870 600 2002
- [www.seafrance.com](http://www.seafrance.com)  
T 0870 571 1711
- [www.ldlines.co.uk](http://www.ldlines.co.uk)  
T 0844 576 8836
- Euro Tunnel  
[www.eurotunnel.com](http://www.eurotunnel.com)  
T 0870 535 3535



## BY TRAIN

Eurostar operates a direct service from London or Ashford to Moutiers (just 20 minutes from resort), and this is one of the most popular and stress free ways of getting to the Alps. It also allows for 8 days skiing if you choose to travel overnight (Friday night out and Saturday night back) rather than Saturday-to-Saturday during the day.

- [www.eurostar.com](http://www.eurostar.com)  
T 0870 160 6600



## BY COACH

A very good value way of travelling

direct to Meribel Les Allues. Ski Meribel offers an overnight sleeper coach service which allows 8 days skiing. Prices from £119.00 return. The coach departs London Victoria or Dover late Friday afternoon and arrives in Les Allues on Saturday morning. This eco-friendly direct service gives you the benefit of free carriage of skis and boots and also means you can avoid airport delays and lost luggage.

- [www.skimeribel.co.uk](http://www.skimeribel.co.uk)  
[info@skimeribel.co.uk](mailto:info@skimeribel.co.uk)  
T 0208 668 8223

*"This is to express our gratitude for a fantastic time we spent in Les Allues. We enjoyed every minute of a very friendly and warm atmosphere. Special thanks to our hosts in Chalet Phoenix who were extremely hospitable."*

11 Jan 2011 E Mukhacheva

# Prices

These prices are per person per week and based on two people sharing a room.

The second price shown is the chalet rate for sole use. This offers a fantastic DISCOUNT to one GROUP taking the whole chalet (this could be a mixture of families, couples or individuals). Please note that if sole occupancy discount is taken then no other reductions apply apart from returning customer discount.

## How to make a booking

**CONTACT US NOW FOR A QUOTE**  
**info@skiblanc.co.uk or call**  
**+44 (0) 208 502 9082**

We will be happy to discuss your requirements and give advice on all the options. We can then give you an option for a few days on your chosen chalet to give you a chance to speak to other members of your party. To confirm the booking please complete the booking form fully and return it to us along with a deposit of £100 per person. A Confirmation Invoice and Ski Pack Information will then be sent to you. The balance of payment is due at least 8 weeks prior to your departure date. Should you book within 8 weeks of departure the full amount is payable at time of booking.

We accept payment by Cheque, Bank transfer, Debit cards or any Visa or Mastercard. There is a 2.75% charge on all credit card transactions. No charge on Debit Cards, includes Switch, Visa Delta.

## Ski Lockers

Ski Lockers are available at La Chaudanne, which is where you get off the bubble from Les Allues. 1 locker will take 3 people's equipment. They are very reasonably priced and mean that you can change and continue your apres ski in comfortable shoes. We can easily book these on your behalf and cancel them if not required.

## Insurance

It is essential that everyone staying with us has adequate winter sports travel insurance. Fogg Travel Insurance Services Ltd has provided comprehensive ski insurance for many years. You can book via the direct link on our website.

T +44 (0)1623 631 331 +44 (0) 1623 420 450  
[www.fogginsure.co.uk](http://www.fogginsure.co.uk)  
[sales@fogginsure.co.uk](mailto:sales@fogginsure.co.uk)

*"A big thank you from everyone in our party for all your help and your very efficient organization as always, making it once again a great holiday."*

P Sampson 24 Mar 2011

## Reductions

- Third adult in triple room 30% reduction.
- Chalet Foehn Bedroom 6 (twin en-suite) This room is not furnished to the same standard as the other rooms in the chalet and has a very small window. There is a 20% reduction for individuals paying the per person rate.
- We are repeating our popular 5% discount to all returning guests.

## Children and babies

- Extra bed in parent's room 50% reduction.
- Children in family or annex room in Foehn, Covie or Charmille 50% reduction.
- Children under 12 years of age occupying normal bed 10% reduction.
- Infants under 2 years in parents room £50 including cot and high chair. Meals not included.

## What's included

- Accommodation and meals as described in the brochure
- Services of our staff in resort as described in the brochure
- Duvets & bed linen
- Minibus service in resort
- Bath and hand towels
- Local taxes

## Not included

- Ski pass
- Hire of equipment
- Ski lessons
- Airport transfers
- Transport to and from UK
- Insurance
- Nanny Service

For our current prices, please check our website. Since publication our prices may have gone up or down slightly.

	Chalets	Chalets	Chalet	Chalet	Chalet	Chalet	Chalet	Chalet	Chalet
	Foehn	Covie	Foehn	Vieille	Vieille	Phoenix	Phoenix	Sourire	Sourire
	Covie	Charmille		Scierie	Scierie				
	Charmille								
		Max 14 beds	Max 16 beds		Max 17 beds		Max 10 beds		Max 9 beds
Dates	Per Person	Sole Use	Sole Use	Per Person	Sole Use	Per Person	Sole Use	Per Person	Sole Use
Fri 16-Dec-2011	£299	£3,200	£3,600	£299	£4,100	£299	£2,700	£299	£2,300
Fri 23-Dec-2011	£499	£5,500	£6,100	£509	£7,400	£429	£4,100	£449	£3,400
Fri 30-Dec-2011	£699	£7,900	£8,300	£669	£9,900	£599	£5,900	£609	£4,600
Sat 07-Jan-2012	£409	£3,900	£4,200	£409	£5,300	£379	£3,300	£369	£2,700
Sat 14-Jan-2012	£329	£3,700	£3,900	£319	£4,700	£289	£2,500	£289	£2,000
Sat 21-Jan-2012	£379	£4,300	£4,800	£349	£5,000	£299	£2,600	£299	£2,300
Sat 28-Jan-2012	£419	£4,700	£5,500	£419	£6,200	£349	£3,200	£349	£2,600
Sat 04-Feb-2012	£449	£5,100	£5,700	£449	£6,500	£399	£3,700	£399	£2,900
Sat 11-Feb-2012	£689	£8,200	£8,600	£689	£9,950	£599	£5,900	£639	£4,700
Sat 18-Feb-2012	£489	£5,300	£5,900	£499	£6,900	£399	£3,700	£399	£2,900
Sat 25-Feb-2012	£489	£5,300	£5,900	£499	£6,900	£419	£3,800	£399	£2,900
Sat 03-Mar-2012	£499	£5,500	£6,100	£519	£7,300	£419	£3,800	£439	£3,100
Sat 10-Mar-2012	£449	£4,900	£5,500	£469	£6,600	£379	£3,500	£389	£2,800
Sat 17-Mar-2012	£449	£4,900	£5,500	£469	£6,600	£379	£3,500	£389	£2,800
Sat 24-Mar-2012	£449	£4,900	£5,500	£469	£6,600	£379	£3,500	£389	£2,800
Sat 31-Mar-2012	£499	£5,300	£5,900	£499	£6,900	£399	£3,700	£439	£3,100
Sat 07-Apr-2012	£499	£5,300	£5,900	£499	£6,900	£399	£3,700	£439	£3,100
Sat 14-Apr-2012	£379	£4,100	£4,400	£379	£5,200	£249	£2,200	£279	£2,100

# Booking Form



Tel/Email for information & reservations  
**Tel: +44 (0) 207 043 5745**  
**+44 (0) 208 502 9082**  
**Fax: +44 (0) 871 750 3029**  
**info@skiblanc.co.uk**  
**www.skiblanc.co.uk**

Please complete this booking form for yourself and members of your party and return it to us together with deposits for the total number of persons booked. Please print clearly in capitals.

Party Leader Name

Address

Total Number of Guests

Postcode

Arrival Date

Tel: (Day)

Tel: (Eve)

Departure Date

Mobile

No. of Nights

Email

Chalet Name

Title	First Name	Surname	Age	Full address including postcode	Daytime Phone	Travel Method	Total Price	Deposit Enclosed
1								£
2								£
3								£
4								£
5								£
6								£
7								£
8								£
9								£
10								£
11								£
12								£
13								£
14								£
15								£
16								£
17								£

Comments:

Number of Cots required

Number of High Chairs required

Number of Lockers required

Lockers will be reserved on your behalf and payment is made direct on collection of your locker.

Special Diet

Total Holidays

£

Total Transfers

£

TOTAL

£

DEPOSIT enclosed

£

I have read the booking conditions and agree to accept them on behalf of the above persons and confirm all party members have adequate insurance. I am over 18 years of age.

Are you a previous client? Yes  No

How did you hear about us?

Brochure, website, advert, recommendation?

Signature

Date

Please return booking form and deposits of £100.00 per person to Ski Blanc Ltd, 29 Ullswater Crescent, Ullswater Business Park, Coulsdon, Surrey, CR5 2XX, UK. If booking is made within 8 weeks of departure the full amount is payable. We accept payment by Cheque, Bank Transfer, Debit Cards or any Visa or Mastercard. There is a 2.75% charge on all credit card transactions. No charge on Debit Cards (includes Switch, Visa Delta).

# Booking Form



Tel/Email for information & reservations  
**Tel: +44 (0) 207 043 5745**  
**+44 (0) 208 502 9082**  
**Fax: +44 (0) 871 750 3029**  
**info@skiblanc.co.uk**  
**www.skiblanc.co.uk**



## Transfers

Date of Arrival	Date of Departure
Time of Arrival (local)	Flight/Train Time
Airport/Station Name	Check in Time
Origin of Flight	Number of People
Number of People	
Chalet Name	
Party Leader Name	
Flight Number	

	Title	Initial	Surname
Passenger 1			
2			
3			
4			
5			
6			
7			
8			

Date of Arrival	Date of Departure
Time of Arrival (local)	Flight/Train Time
Airport/Station Name	Check in Time
Origin of Flight	Number of People
Number of People	
Chalet Name	
Party Leader Name	
Flight Number	

	Title	Initial	Surname
Passenger 1			
2			
3			
4			
5			
6			
7			
8			

## Your Credit or Debit Card details

There is a 2.75% charge on all credit card transactions.  
 No charge on Debit Cards (includes Switch, Visa Delta).

1. Name	Valid From	Expiry	Balance to be taken with this Card
Card No	Total to be Deducted		Yes <input type="checkbox"/> No <input type="checkbox"/>
<input type="checkbox"/> Credit Card <input type="checkbox"/> Debit Card	3 Digit Security Number _ _ _		
2. Name	Valid From	Expiry	Balance to be taken with this Card
Card No	Total to be Deducted		Yes <input type="checkbox"/> No <input type="checkbox"/>
<input type="checkbox"/> Credit Card <input type="checkbox"/> Debit Card	3 Digit Security Number _ _ _		
3. Name	Valid From	Expiry	Balance to be taken with this Card
Card No	Total to be Deducted		Yes <input type="checkbox"/> No <input type="checkbox"/>
<input type="checkbox"/> Credit Card <input type="checkbox"/> Debit Card	3 Digit Security Number _ _ _		
4. Name	Valid From	Expiry	Balance to be taken with this Card
Card No	Total to be Deducted		Yes <input type="checkbox"/> No <input type="checkbox"/>
<input type="checkbox"/> Credit Card <input type="checkbox"/> Debit Card	3 Digit Security Number _ _ _		
5. Name	Valid From	Expiry	Balance to be taken with this Card
Card No	Total to be Deducted		Yes <input type="checkbox"/> No <input type="checkbox"/>
<input type="checkbox"/> Credit Card <input type="checkbox"/> Debit Card	3 Digit Security Number _ _ _		
6. Name	Valid From	Expiry	Balance to be taken with this Card
Card No	Total to be Deducted		Yes <input type="checkbox"/> No <input type="checkbox"/>
<input type="checkbox"/> Credit Card <input type="checkbox"/> Debit Card	3 Digit Security Number _ _ _		

Please carry all Totals to the front page of the Booking Form. If there is insufficient space, photocopy the Booking Form to continue.

# Booking Conditions

## BOOKINGS AND DEPOSIT

"Customer" shall mean the person in whose name the booking is made and shall include all other persons on whose behalf the booking has been made. Each Customer is jointly and severally liable for the due fulfillment of any contract term and any and all payments due. All bookings must be made on the form provided, signed and accompanied by a non-refundable deposit of £100.00 per person. If the booking is made within eight weeks of the departure date the booking must be accompanied by payment of the full holiday price. No contract shall exist between Ski Blanc and the Customer until a booking form, together with the correct deposit is received by Ski Blanc and a confirmation of booking and invoice has been issued by Ski Blanc to the Customer.

## INSURANCE

The Customer acknowledges the need to acquire their own appropriate travel insurance effective at the time of booking and payment of the deposit hereunder.

## PAYMENT

The full balance of the monies due from the Customer must be paid to Ski Blanc at least eight weeks before departure or upon receiving the final invoice which ever occurs last. If Ski Blanc does not receive the balance due as indicated above, it reserves the right to cancel the booking and the deposit paid by the Customer shall be retained by Ski Blanc to help defray its administrative costs. Ski Blanc will use its best endeavours to advise the Customer in a timely manner of such cancellation. No liability whatsoever shall however attach to Ski Blanc as a result of such a cancellation.

## CANCELLATION OF HOLIDAYS

Ski Blanc shall have the right to cancel a holiday or other travel arrangements (including transfers) if it is necessary to do so as a result of factors outside its control, including but not limited to: war, political unrest, weather, strikes, Acts of God, epidemics, riots, civil strife and commotion, industrial disputes, terrorist activity, natural and technical disasters, closure of ports and airports, the non-availability of aircraft or accommodation and any other occurrence envisaged by the term "force majeure". If for reasons beyond the control of Ski Blanc it is found necessary to cancel a holiday, Ski Blanc will offer the Customer the choice of an alternative holiday of at least a comparable standard if available, or a refund (pro rata if applicable) of any deposit and/or monies paid. any deposit and/or monies paid.

## CANCELLATION OF HOLIDAYS BY THE CUSTOMER

Any cancellation made by the Customer must be in writing and made by the person who signed the booking form. Any cancellation made prior to 63 days before the intended departure date shall still result in the £100 non-refundable deposit per person being retained by Ski Blanc. If the cancellation is made within 63 days of the intended departure date it is agreed that the following cancellation charges shall apply:

36-63 days	<b>50% of total</b>
21-35 days	<b>75% of total</b>
20 days and less	<b>100% of total</b>

## WEATHER CONDITIONS AND TRAVEL DELAYS

Ski Blanc shall not be liable for any loss, damage or disappointment arising out of or connected with weather conditions or travel delays suffered by the Customer howsoever and wheresoever caused.

## LIMITATION & EXCLUSION OF LIABILITY

The Customer agrees that when travelling by air, ship, train or bus or any other mode of transport (including ski lifts), not owned or supplied by Ski Blanc, the terms and conditions of carriage of that carrier shall apply and in no case shall Ski Blanc be held or deemed liable for any death, injury, loss, damage or delay that may arise as a result. Ski Blanc does not hold itself out as a professional carrier and any transfers or transport provided by Ski Blanc (including via mini-buses or cars owned or supplied by them) is undertaken entirely at the Customer's own risk in all respects. It is expressly agreed that Ski Blanc shall not be liable for any delay occurring during transfers or transportation of the Customer, including but not limited to loss of any flight or other transport connection. Furthermore it is hereby agreed that any liability that might attach to Ski Blanc by operation of any applicable law, shall be limited to and shall not exceed under any circumstances the relevant insurance cover carried by Ski Blanc at that time.

## CHANGE OF ACCOMMODATION

Ski Blanc reserves the right to change the Customer's requested accommodation for logistical reasons, such as chalet occupancy and staffing levels and any other operational consideration. Whilst every reasonable endeavour will be made to provide comparable accommodation, if this is not possible then Ski Blanc shall pay a reasonable level of financial compensation to the Customer to take account of such changes. In no case however, shall such compensation exceed the total cost of the individual Customer's holiday.

## LOST AND STOLEN PROPERTY

In the event that guests lose property whilst on holiday, or leave items in the chalet when returning home, no responsibility shall be accepted by Ski Blanc in the event that the property is not recovered or returned. Ski Blanc does not accept any responsibility for theft of Customer's belongings from their chalets or elsewhere. Customers are advised to carry all personal items with them at all times, including cash, credit cards and passports.

## CUSTOMERS' RESPONSIBILITY FOR SKI BLANC PROPERTY

Each Customer shall have joint and several liability for any loss or damage caused to Ski Blanc's property including all chalets owned and operated by them. Such loss or damage shall not include normal wear and tear but shall include any willful or negligent loss or damage. Ski Blanc reserves the right to require Customers to leave their premises or property and Ski Blanc shall have the right to cancel the remainder of a Customer's holiday for bad behaviour if the Customer's behaviour is deemed inappropriate, aggressive or threatening. In such an event the Customer shall not be entitled to any refund or compensation whatsoever.

## LAW AND JURISDICTION

These terms and conditions which the Customer acknowledges having read and understood when booking their holiday with Ski Blanc, shall constitute the contract between Ski Blanc and each and every Customer. It is agreed that this contract shall be governed by English law and any dispute hereunder shall be determined via the exclusive jurisdiction of the relevant County or High Courts of England.




Tel/Email for information & reservations

**Ski Blanc Ltd**, 29 Ullswater Crescent, Ullswater Business Park, Coulsdon, Surrey CR5 2XX, UK

Tel **+44 (0) 207 043 5745 & +44 (0) 208 502 9082**

Fax **+44 (0) 871 750 3029**

Email **info@skiblanc.co.uk**

**2011/12**

**www.skiblanc.co.uk**



**Meribel enjoys a historically long season, giving you an excellent choice of dates:**

**PREMIER NEIGE**  
Take advantage of quieter slopes, cheaper liftpasses, a real pre-Christmas treat

**CHRISTMAS/ NEW YEAR**  
Enjoy a fantastic festive break in a wonderful alpine setting with friends & family.

**JANUARY**  
We have some amazing January deals – plan your holiday now and get a January bargain, whilst enjoying great snow conditions.

**FEBRUARY**  
Guaranteed snow, statistically deepest average snow levels.

**MARCH**  
We have some enticing spring prices for you to enjoy longer ski days, sunshine and even some powder.

**APRIL**  
Spring skiing at its best & Easter in the mountains.